

tungsten carbide cutters



技术咨询与报价

电话: 18823303057 QQ:2104028976

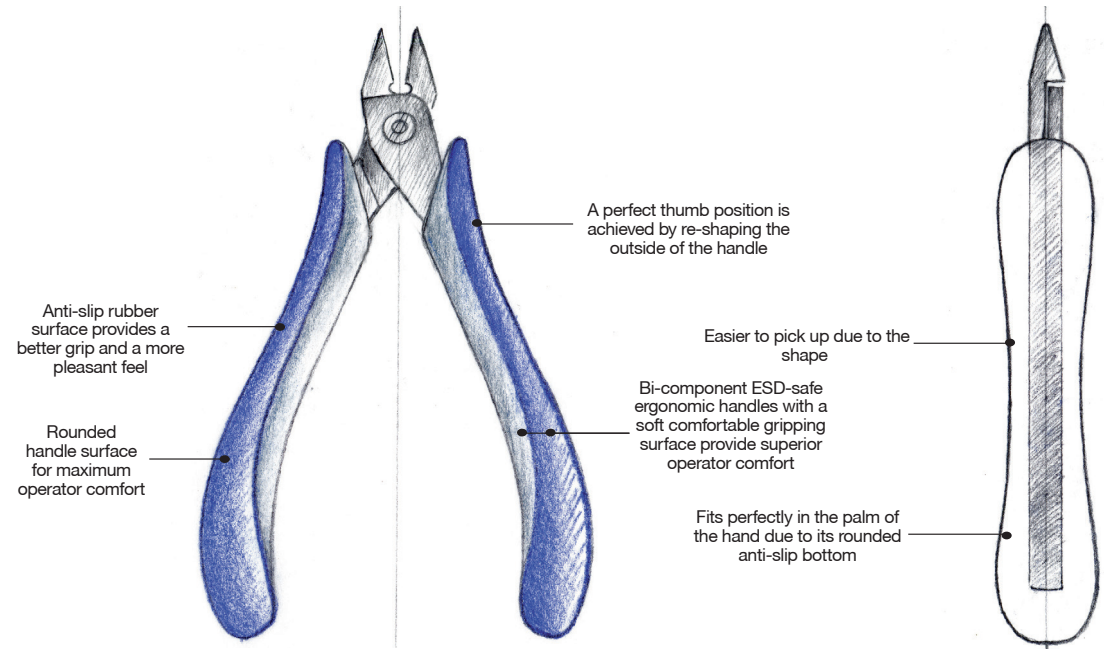




Statement by Red Dot jury: Ergo-tek has excellent tactile qualities as a result of its high ergonomics and carefully thought-out material textures.

Following the User-Centered Design approach of one of the world's most respected research universities (University of Milan), over a two year period, Ideal-tek gained a full understanding of the needs, wants and frustrations of end users.

Subsequent painstaking attention to detail at every stage of the design process resulted in the creation of the ideal handles. Precision Swiss manufacture provides quality, accuracy and longevity. The addition of Italian design brings beauty and elegance.



The new lighter weight **ERGO-TEK SLIM** range is designed especially for smaller hands while providing the same ergonomic, ESD safety standards, and technical advantages you expect from Ideal-tek.

Upgraded features:

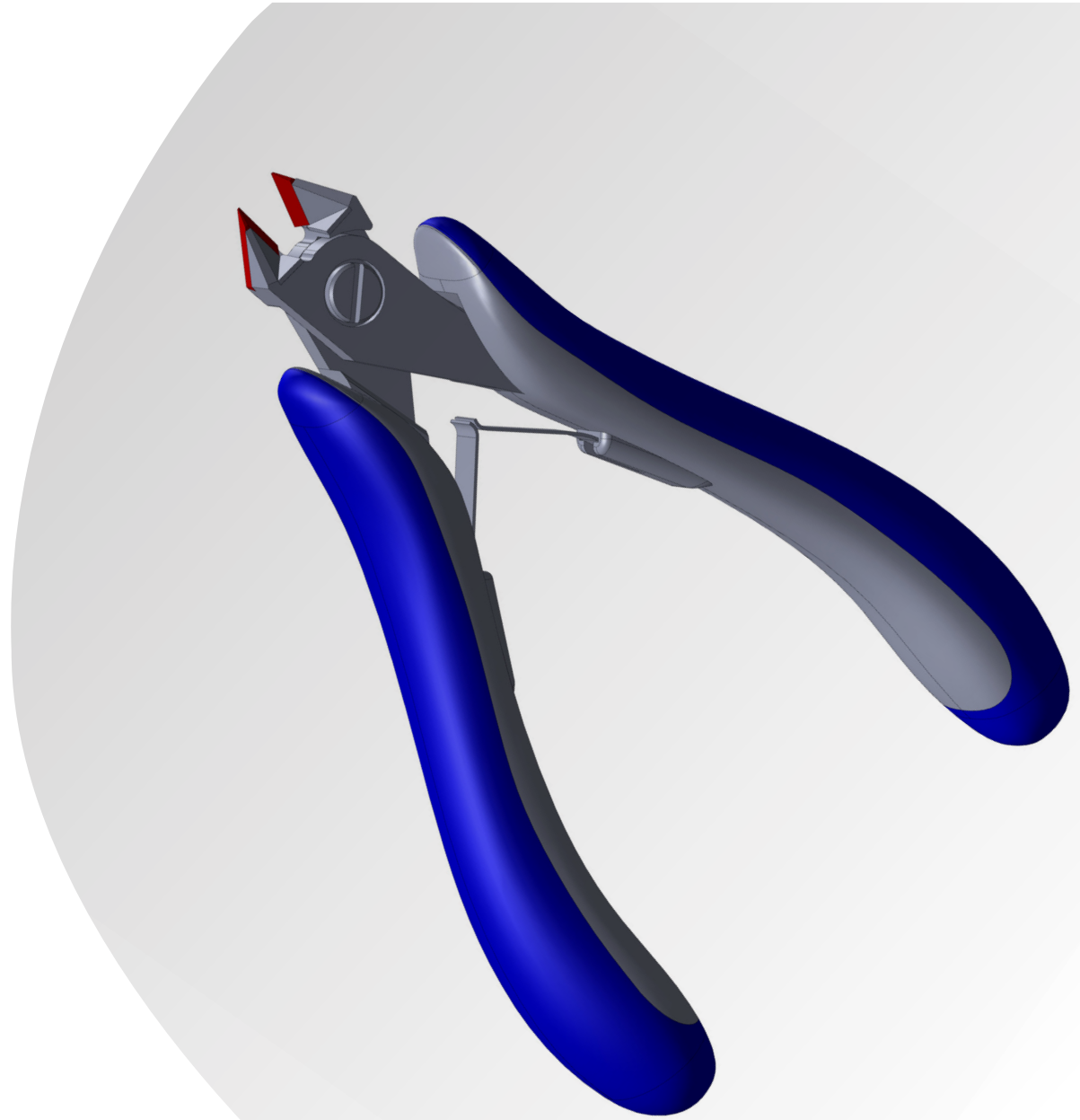
- Revised ergonomic handle to provide enhanced operator comfort and reduce repetitive motion injuries
- Lighter weight
- Better accessibility and visibility in confined areas

With **Ergo-tek** AND **Ergo-tek slim**, users are now able to custom fit high precision tools to their personal preference and application. No more, one line fits all!





- Engineered for hard wires
- Tungsten carbide blades
- 81 HRC hardness
- Perfect symmetry
- Shock prevention system
- Dual leaf springs made of stainless steel
- Lap joint with screw to achieve a high level of strength and precision
- Nuts made of hardened alloy steel to resist high cutting load
- Fine-pitched screw for perfect joint adjustment





2-Component ESD-safe Ergonomic handles with a soft comfortable gripping surface.

2 sizes: Ergo-tek (E) and Ergo-tek slim (ES)

For every handles production lot Ideal-tek performs the following tests:

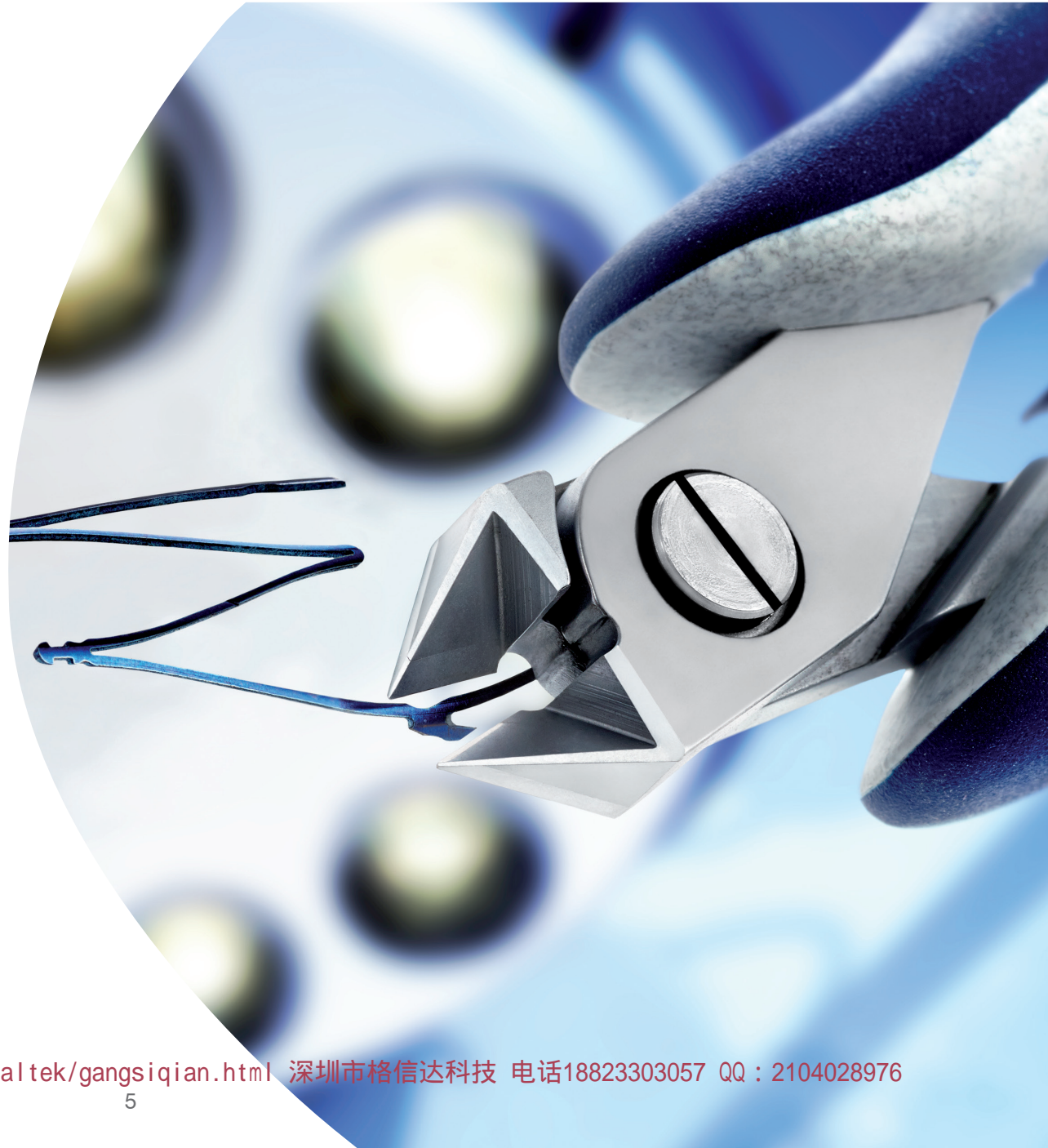
- point to point resistance
- surface resistance
- decay time analysis





Application of Ideal-tek cutters line:

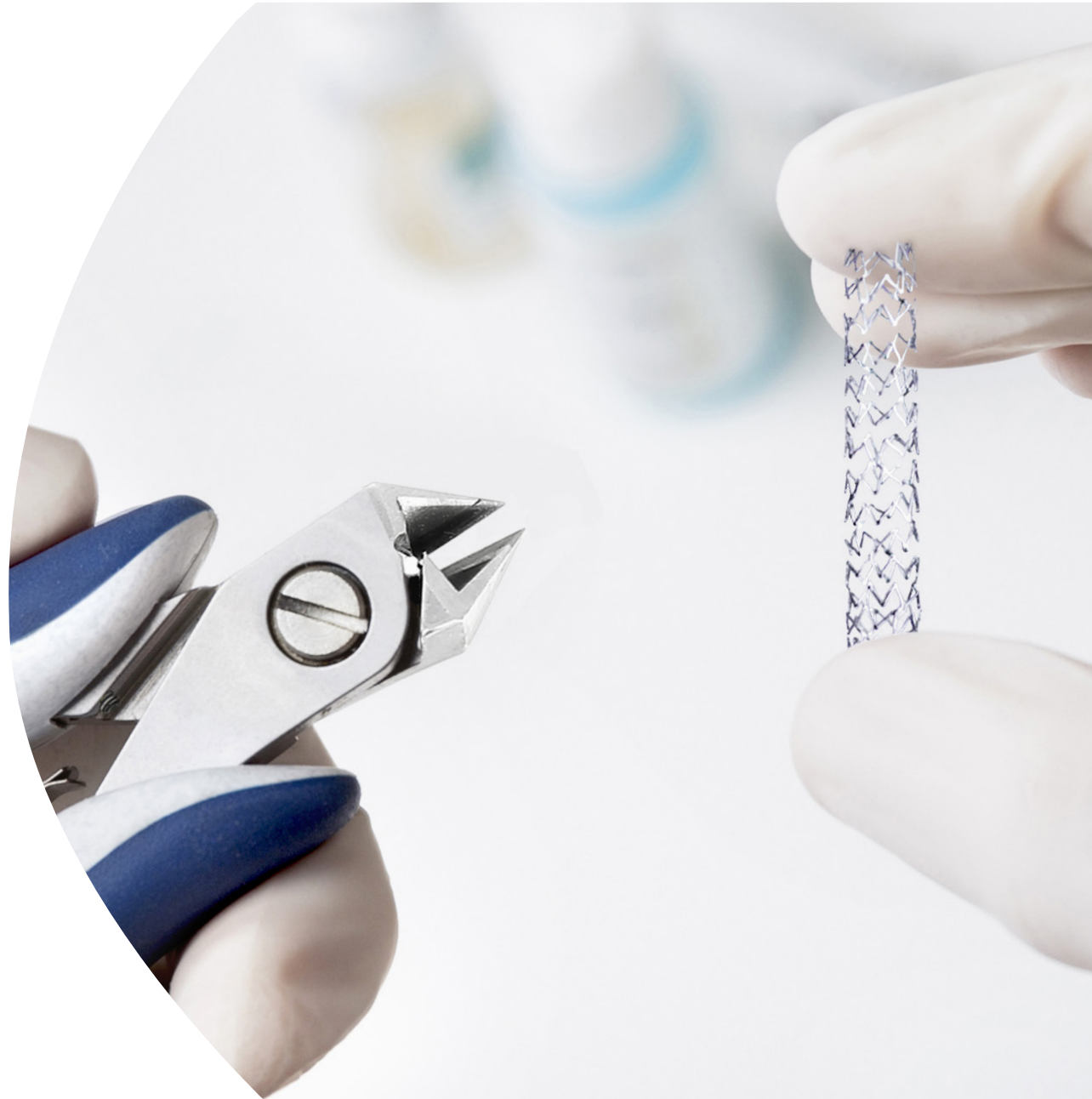
- Stents
- Braided mesh
- Catheters
- Single/Multiple fliers
- Guide wires
- Lateral/Internal cuts





ANTI-SHOCK System

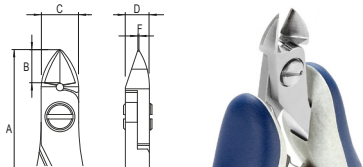
To enhance tool life, we have added a New ANTI-SHOCK system set screw that secures one blade against the other ensuring a flush cut to a given standoff while preventing the blades from colliding or overlapping.





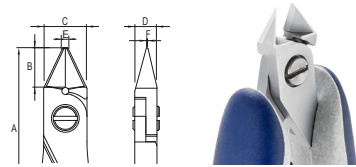
TUNGSTEN CARBIDE CUTTER LINE

Oval



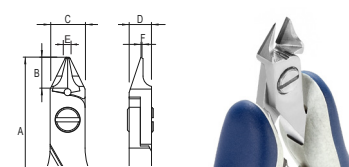
Tungsten Carbide Sharp Tip - Oval Diagonal Cutters

Tapered



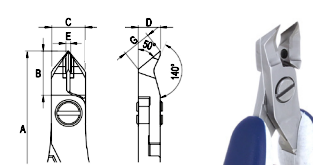
Tungsten Carbide Sharp Tip - Tapered Diagonal Cutters

Tapered & Relieved



Tungsten Carbide Sharp Tip - Tapered & Relieved Diagonal Cutters

Tapered & Angled head 50°



Tungsten Carbide Sharp Tip - Tapered Angled Cutters

E = ERGO-TEK HANDLE

ES = ERGO-TEK SLIM HANDLE

Art. No.	Type	Head Shape	A[mm]	B[mm]	C[mm]	D[mm]	E[mm]	F[mm]	G[mm]	Cutting Edges	Copper*	Kovar*	Nickel*	Stainless*	Platinum*	Tungsten*	Piano Wire*	NiTinol*
ES141TX	Small	Oval	120	10	10	6.4	-	-	-	Flush	•	•	•	•	•	•	•	•
ES351TX	Large	Tapered	118	7.5	12.5	6.4	0.7	0.4	-	Flush	•	•	•	•	•	•	•	•
ES542TX	Small	Tapered & Relieved	120	8.5	10	6.4	0.7	0.3	-	Full-Flush	•	•	•	•	•	•	•	•
ES552GTX	Large	Tapered & Relieved	120	10	10	6.4	-	-	-	Full-Flush	•	•	•	•	•	•	•	•
ES248TX	Small	Tapered & Angled head 50°	123	13	10	6.4	1.5	-	8.30	Full-Flush	•	•	•	•	•	•	•	•

* Depending on the wire diameter



瑞士ideal-tek剪钳
reddot award 2014
winner

http://www.testeb.com/gongju/idealtek/gangsiqian.html 深圳市格信达科技 电话18823303057 QQ : 2104028976